



**MLA
COLLEGE**

In partnership with



**UNIVERSITY OF
PLYMOUTH**

ACADEMIC PARTNERSHIPS

**PROGRAMME QUALITY HANDBOOK
2022-23**

BSc (Hons) Sustainable Maritime Operations

CONTENTS

1.	Welcome and Introduction	3
2.	About this Handbook.....	4
3.	Programme Specification	5
3.1.	Brief Description of the Programme.....	6
3.2.	Details of Accreditation by a Professional/Statutory Body (if appropriate)	6
3.3.	Exceptions to University of Plymouth Regulations (Non-Standard Regulations)	6
3.4.	Programme Aims	9
3.5.	Programme Intended Learning Outcomes (ILO)	9
3.6.	Distinctive Features.....	9
3.7.	Student Numbers.....	9
3.8.	Progression Route(s)	9
3.9.	Admissions Criteria	10
3.10.	Programme Structure.....	13
3.11.	Explanation and Mapping of Learning Outcomes, Teaching & Learning and Assessment	15
3.12.	Work Based/Related Learning	21
4.	Module Records	22

1. Welcome and Introduction

Welcome to MLA College. We are delighted that you have chosen to study with us. We will do all we can to ensure sure you get the maximum benefit from your time here – and that you will be well prepared for the next stage in your academic or professional career path.

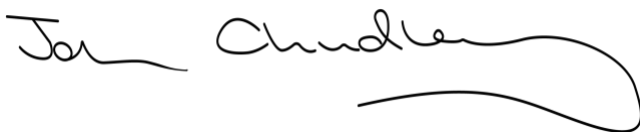
You will already know that MLA College is internationally recognised for its excellent reputation, and you will also benefit from the consistently high standards and expectations MLA College brings to all aspects of its teaching and learning.

You will find that all our staff are dedicated to ensuring you have the best experience possible. As well as being professional, intellectually challenging and up-to-date in their knowledge of the subject matter, we ensure that those teaching you do so in a research-informed, creative, responsive, and engaging way. Your tutors are supported by highly experienced professional colleagues who are here to give you advice and guidance on all aspects of your studies.

As a student at MLA College and the University of Plymouth your feedback is important to us, and we have in place a number of surveys conducted by MLA College during your period of registration. Please do take the time to complete these surveys which will inform our plans to ensure all students continue to receive the best possible experience during their time with us.

We want you to enjoy the best study experience possible and we are here to help create the best opportunities for what you want to do next.

Welcome again to the MLA College.

A handwritten signature in black ink, reading "John Chudley". The signature is fluid and cursive, with a long, sweeping underline that extends to the right.

Professor John Chudley, Rector

MLA College

2. About this Handbook

This Programme Quality handbook contains important information including:

The approved programme specification

Module records

Note: The information in this handbook should be read in conjunction with the current edition of:

- MLA College Student Handbook which contains student support- based information available [here](#)
- Your University of Plymouth Student Handbook available [here](#)
- Non-Standard Regulations (Exceptions to The University of Plymouth Regulations)

3. Programme Specification

-Programme Title: BSc Sustainable Maritime Operations

Partner Delivering Institution: Marine Learning Alliance

Start Date: 2015-16

First Award Date: 2016-17

Date(s) of Revision(s) to this Document:

New Programme Approval 9th November 2015

This programme specification template aligns with recommendations within the UK Quality Code for Higher Education¹. The information provided, by the programme proposer, in each section is definitively agreed between the delivering institution and University of Plymouth at approval. Therefore, any requests for changes to content (post the conditions set at approval) must follow University of Plymouth's procedures for making changes to partnership programmes².

Programme Details

Awarding Institution:	University of Plymouth
Partner Institution and delivery site (s):	MLA College, The Merchant, St Andrew Street, Plymouth, PL1 2AX
Accrediting Body:	N/A
Language of Study:	English ³
Mode of Study:	Part time distance e-learning
Final Award:	BSc
Intermediate Award:	None
Programme Title:	BSc Sustainable Maritime Operations
UCAS Code:	N/A Applications handled directly
JACS Code:	F841
Benchmarks:	Framework for Higher Education Qualifications (FHEQ); QAA Earth Sciences, Environmental Sciences and Environmental Studies (ES3) Subject Benchmark Statements, October 2014; QAA Business and Management Subject Benchmark Statements, February 2015; "SEEC Credit Level Descriptors for Higher Education", Southern England Consortium for Credit Accumulation and Transfer (SEEC), 2010.
Date of Programme Approval:	November 2015

¹QAA, 2015, Chapter B1: programme Design, development and Approval: <http://www.qaa.ac.uk/assuring-standards-and-quality/the-quality-code/quality-code-part-b>, last accessed 11th May 2015.

² If required, please contact Academic Partnerships Programme Administration for assistance.

³ Unless otherwise approved through University of Plymouth's Academic Development and Partnerships Committee

3.1. Brief Description of the Programme

The MLA College's BSc Sustainable Maritime Operations is intended to meet the needs of the wider maritime industry and its workforce by providing a flexible, innovative programme of study. This degree programme will facilitate the development of those already working within the industry either afloat or ashore, although employment at time of study is not a requirement.

This part-time, distance e-learning programme has been designed to incorporate the latest technologies and innovations in e-learning, taking into account the fact that students may be deployed in remote locations or on-board ships while studying, with limited access to the Internet. Offering a selection of optional modules, students may choose a study path which best meets their interests, aims and aspirations as well as meeting the needs of employers in the marine and maritime industries. MLA College aspires to provide study opportunities for seafarers, and offers maximum flexibility in study, important for those in full-time employment looking to engage with Higher Education and enhance their qualifications.

3.2. Details of Accreditation by a Professional/Statutory Body (if appropriate)

None

3.3. Exceptions to University of Plymouth Regulations (Non-Standard Regulations)

(Note: University of Plymouth's Academic Regulations are available [here](#))

The University's Academic Regulations are implemented in full, with the exceptions below:

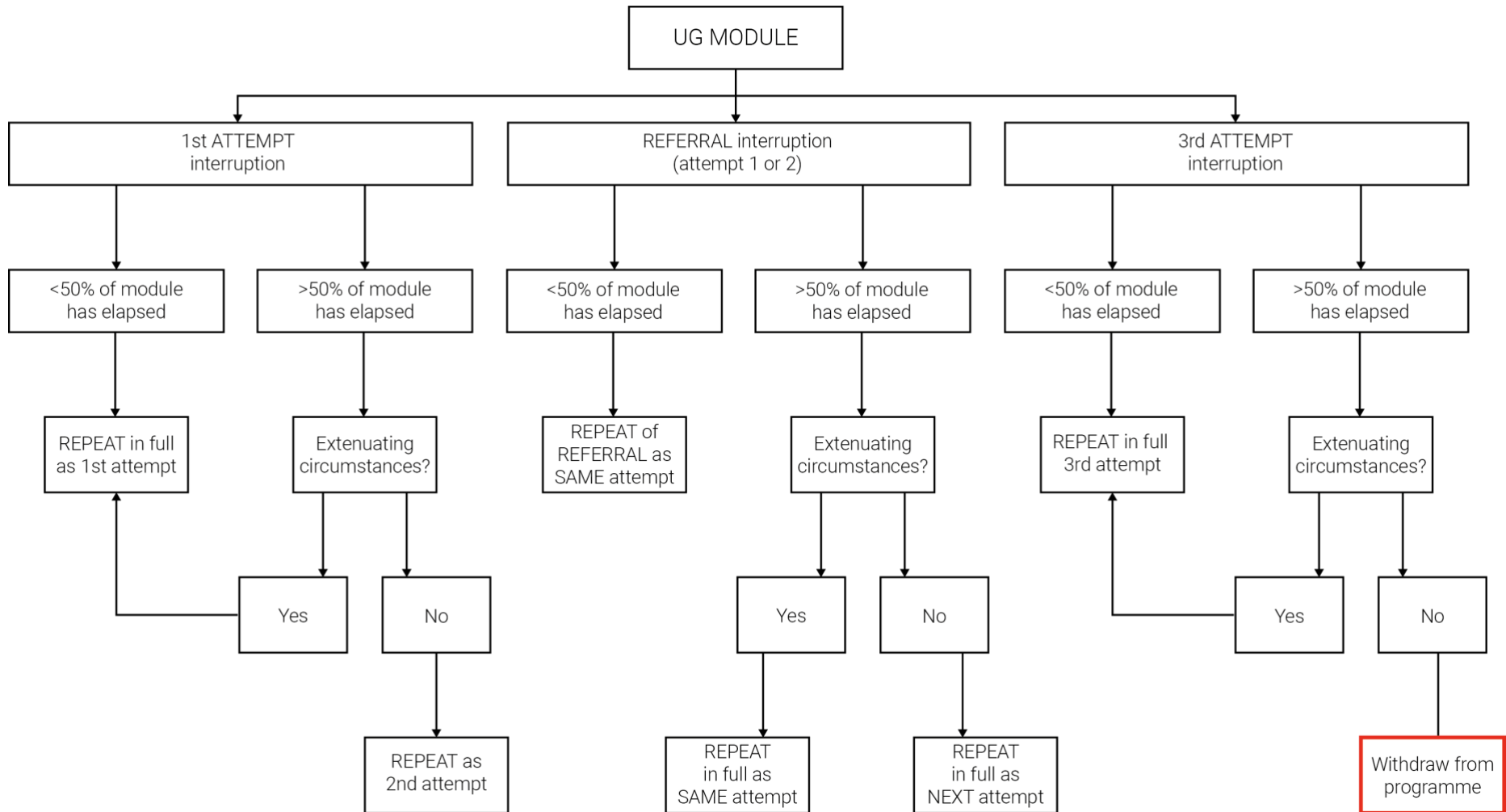
Approved by the University of Plymouth on 15th June 2021.

1. **48 Hour Extension for Late Submission:** the student's Personal Tutor may approve a 48-hr extension for Distance Learning assessment submission without need for formal Extenuation Circumstances application.
2. **28 (calendar) day Extenuating Circumstances Extension for Late Submission:** in exception to the University of Plymouth's Extenuating Circumstances Policy and Procedures, both self-certified and evidenced applications for Extenuating Circumstances (EC), considered valid by MLA College, will be offered 28 calendar days as an extension to the assessment deadline. Additionally, poor internet connection, where appropriately described as an employment driven issue causing the missing of an assessment deadline (e.g., whilst 'at sea'), may be considered as a valid extenuating circumstance.
3. **Instant Referrals in the event of Failure or Non-Submission:** with or without submission of a valid Extenuating Circumstances claim, may be approved through MLA College's Interim Assessment and Award Board (IAAB) which then reports to the next scheduled University of Plymouth Subject Assessment Panel (SAP) and/or Award Assessment Board (AAB).
4. **Maximum Period of Study:** all distance-learning awards that equate to a single level of study or more, including programmes-in-parts, have a maximum period of study of 10 years. Should completion within that timeframe appear unreasonable, University of Plymouth regulations for Accreditation of Prior Learning should be considered and followed prior to enrolment onto each part.

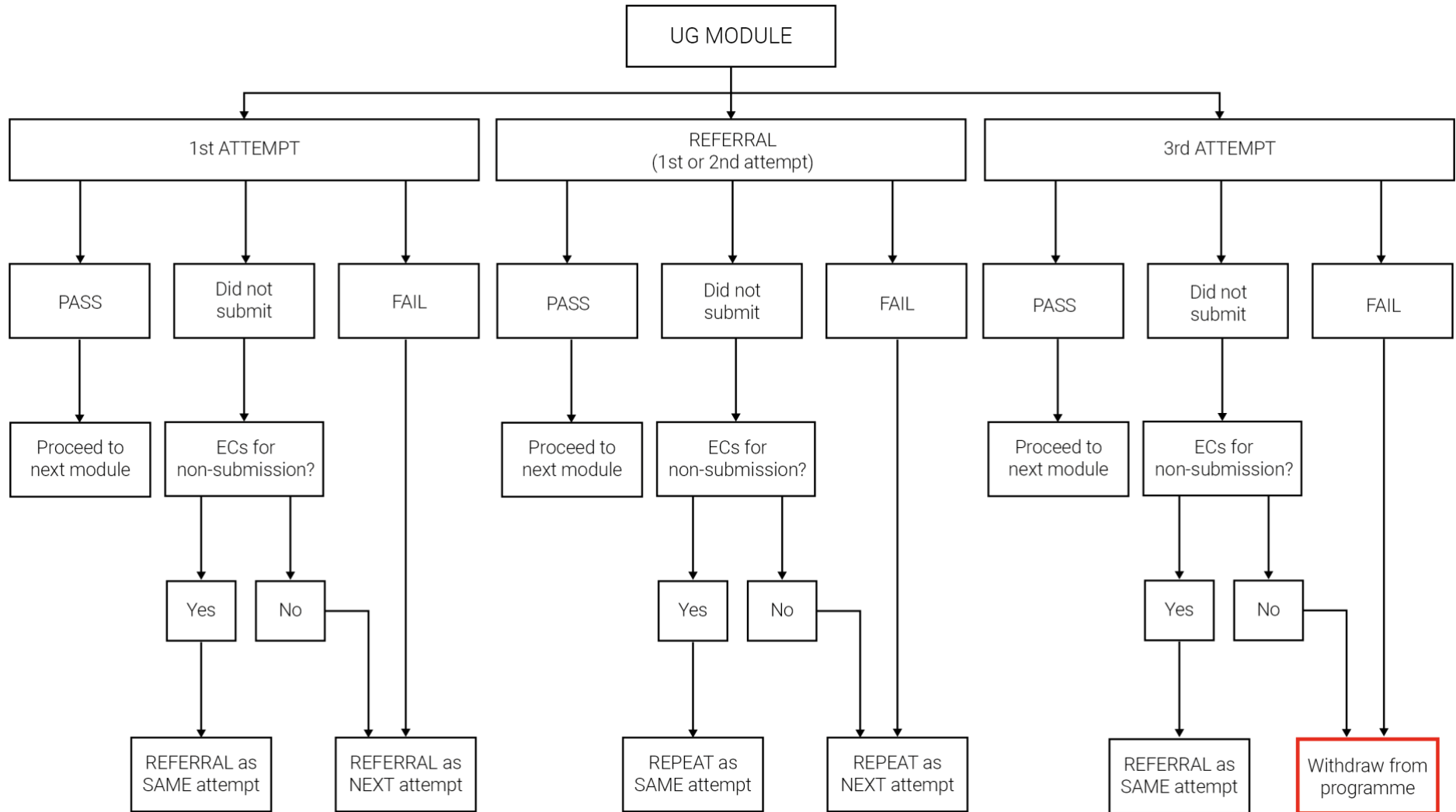
Examples:

- CertHE + DipHE + BSc (Hons) = 360 credits = 10 years max.
- BSc + BSc (Hons) = 120 Level 6 credits = 10 years max.
- PGCert + PGDip + MSc = 120 credits = 10 years max

Referral/Repeat flow for students interrupting before the completion of an undergraduate module



Referral/Repeat flow for students completing an undergraduate module



3.4. Programme Aims

The aim of the programme is to support students in undertaking a substantive research project, which will develop their skills in.

- a) Selecting and formulating an appropriate independent investigation;
- b) Undertaking literature reviews and using relevant research methods;
- c) Planning, processing and presenting information in a major piece of independent academic work;
- d) Working effectively in a professional context within the maritime commercial and scientific industries.

3.5. Programme Intended Learning Outcomes (ILO)

By the end of this programme the student will be able to:

- a) Analyse, synthesise and critically evaluate scientific and business intelligence information, communicating findings in a range of formats, including the use of digital tools
- b) Undertake research and analysis of data with minimal supervision, paying due consideration to the guiding principles relating to ethics, safety, sustainability, and corporate and social responsibility

3.6. Distinctive Features

The BSc (Hons) Sustainable Maritime Operations is an innovative, part time distance e-learning honours degree top-up programme. The e-learning course materials are designed by a team of academics and learning technologists to provide a seamless Total Learning Package. This Total Learning Package may be downloaded to a variety of platforms, including tablets, smart phones and computers. Using cutting-edge technology, the Total Learning Package is fully functional whether the device is connected to the internet or not, which enables students to study successfully in any location ashore, or whilst deployed for extended periods offshore. The Total Learning Package adds considerable value to lecture material with formative testing, transcripts and learning support materials.

The SMO BSc (Hons) is a flexible, fully tutor supported, distance e-learning programme, which has broad appeal and is a gateway to professional advancement. Students' progress through the programme in a modular fashion, allowing maximum flexibility in integrating their part-time studies with a busy professional schedule and their own personal commitments. Further flexibility exists in the form of open module choices, allowing students the opportunity to focus in either a maritime scientific or commercial context, or across both areas if desired.

Use of University of Plymouth teaching and learning resources is enhanced by the availability of the extensive Institute of Marine Engineering, Science and Technology (IMarEST) e-library and virtual resources, available to all MLA students.

3.7. Student Numbers

The scalability of the part-time distance e-learning model employed by the MLA facilitates considerable flexibility in terms of student numbers. The Personal Tutor: Student ratio is the most important aspect in maintaining the quality of student experience, and MLA's target is a maximum of 1:25 in any module

Minimum student numbers per stage = 10

Target student numbers per stage = 25

Maximum student numbers per stage = N/A. Tutor capacity can be scaled in a timely way to meet demand

3.8. Progression Route(s)

This award belongs to a suite of programmes, with the following timeframes for part-time completion:

BSc (20 months)

BSc (Hons) (6 months)

PGCert (12 months)

PGDip (12 months)

MSc (9 months)

In addition to achieving the BSc (Hons) Sustainable Maritime Operations, successful graduates are able to apply to complete the University of Plymouth Academic Partner MLA distance e-learning PGCert Sustainable Maritime Operations.

3.9. Admissions Criteria

Qualification(s) Required for Entry to this Programme:	Details:
Level 2: <ul style="list-style-type: none">• Key Skills requirement / Higher Level Diploma: and/or <ul style="list-style-type: none">• GCSEs required at Grade C or above:	All applicants must have GCSE (or equivalent) Maths and English at Grade C or higher.
Level 3: at least one of the following: <ul style="list-style-type: none">• AS/A Levels• Advanced Level Diploma:• BTEC National Certificate/Diploma:• VDA: AGNVQ, AVCE, AVS:• Access to HE or Year 0 provision:• International Baccalaureate:• Irish / Scottish Highers / Advanced Highers:	N/A as admission will be to a level 6 award
Work Experience:	In the case of admission to the BSc Sustainable Maritime Operations programme, MLA College are keen to consider admission on the basis of work or life experience. Where an applicant presents with appropriate experience, this may be taken into account in lieu of certificated qualifications, regardless of age. Relevant maritime experience will be considered on individual merit. Specific reference to APCL and APEL is made below.

<p>Other HE qualifications / non-standard awards or experiences:</p>	<p>Merchant Navy Training Board (MNTB) approved HND, FdSc or equivalent.</p> <p>Completion of a relevant DipHE, or Level 5 programme or equivalent.</p> <p>Students can apply to the programme who have passed 240 credits at an accredited and approved provider of higher education in a relevant discipline or a cognate subject, 120 of which should be at level 5.</p>
<p>Accreditation of Prior Learning (APL)</p>	<p>The achievement of formal qualifications is not the only way of identifying a student's potential. Admissions staff will assess application 'holistically', considering skills, experience and abilities as well as commitment and motivation to study to establish whether the applicant has the potential to benefit from the programme and graduate successfully. Experience may include knowledge or practice gained from previous work or study, voluntary or community involvement or care responsibilities. Applications will be dealt with on their individual merits. MLA College follows the criteria applied by the University of Plymouth and further information can be accessed with reference to their Academic Regulations.</p> <p>The maximum amount of prior credit which a student may claim towards the programme and the minimum credit which must then be studied at the University in relation to this undergraduate award, is:</p> <p>Degree</p> <p>Credit that can be awarded by APL: 240 credits.</p> <p>Credit awarded through study: 80 credits, including at least 60 at Level 6</p>
<p>Interview / Portfolio requirements:</p>	<p>Applicants are expected to submit a full <i>Curriculum Vita</i> or résumé and an application form. Admissions tutors for the Marine Learning Alliance will check all applications thoroughly and may also arrange an interview (usually by telephone or video conferencing) for potential students in order to assess their suitability for study. Offers of places are based on the information provided in the application documents and interview (where appropriate).</p> <p>In some instances, students may be required to undertake an interview (online, telephone or face to face), or to complete a portfolio assessment and interview. This may take the form of a portfolio of evidence of experiential learning. In line with University regulations, the learning derived from experience or study must be identified in order to be assessed. Identification must be made by the student, on the basis of systematic reflection on the experience or study and the provision of clear and evidenced statements about that learning. This will be formally reviewed to determine that the learning has in fact occurred and that it is still current, and equivalence to University credit weightings and levels.</p>
<p>Independent Safeguarding Agency (ISA) / Disclosure and Barring Service (DBS) clearance required:</p>	<p>No.</p>

English language requirements

If students have not obtained or do not have the appropriate entry qualifications in the English language, they may be required to produce evidence of English language ability. This will normally be the equivalent of:

- GCSE Grade C or above in English language.
- IELTS 6.0 overall or above with a minimum of 5.5 in all four components (listening, reading, speaking and writing)
- For further information and alternatives to IELTS, see University of Plymouth's [International Student Entry Requirements](#).

3.10. Programme Structure⁴

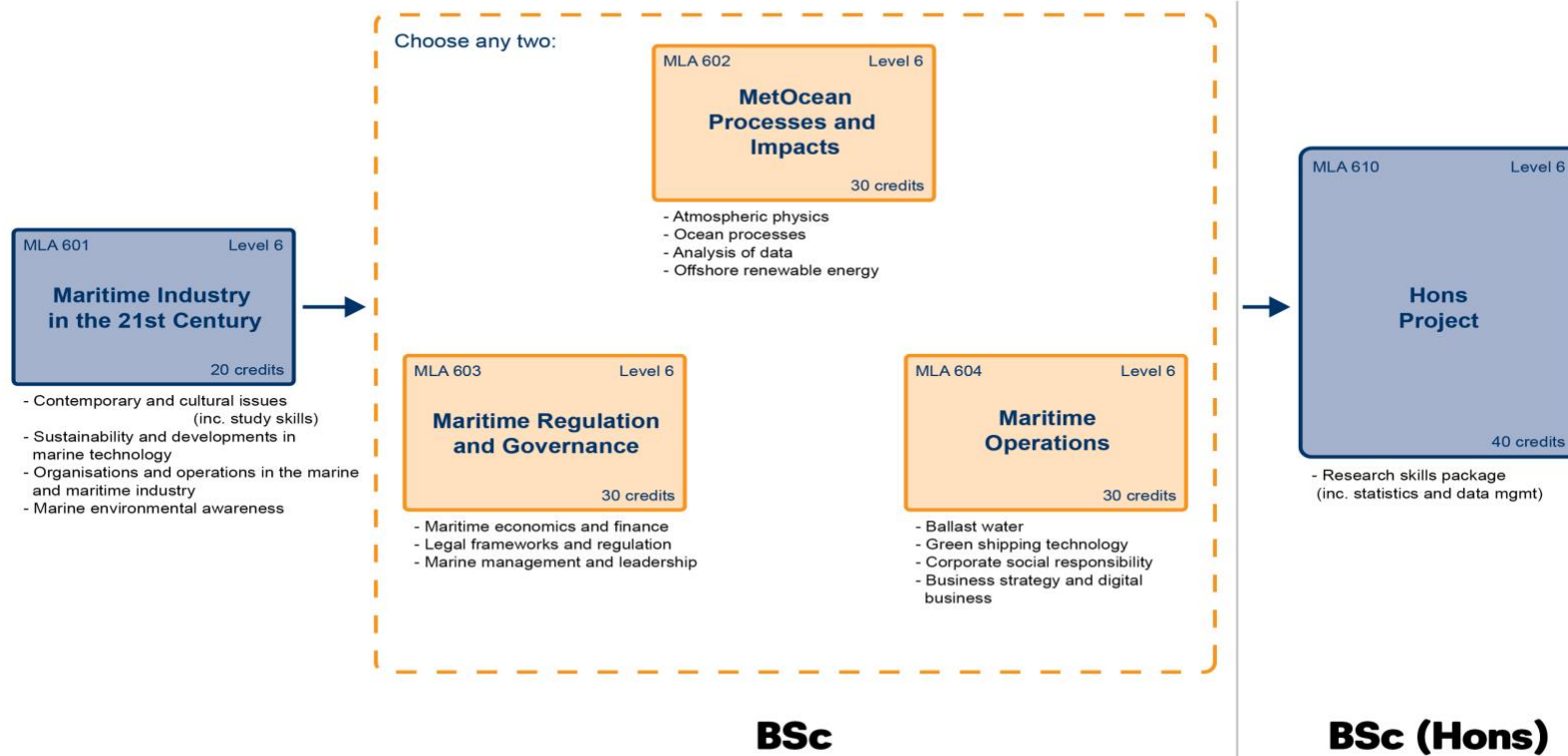
The following structure diagram(s) provides the current structure for this programme:

FHEQ level: 6 For: Sustainable Maritime Operations Full Time				
F/T Route Year	When in Year? (i.e. Autumn, Spring etc)	Core or Option Module	Credits	Module
No Full Time Route				
FHEQ level: 6 For: Sustainable Maritime Operations Part Time				
P/T Route Year	When in Year? (i.e. Autumn, Spring etc)	Core or Option Module	Credits	Module
Part time study 12 months	Part time distance e-learning	Core module	40 credits	MLA610 Honours project

See figure below for further details

BSc/BSc (Hons) Sustainable Maritime Operations

Key: Compulsory module Optional module



March 2016



3.11. Explanation and Mapping of Learning Outcomes, Teaching & Learning and Assessment⁵

Developing graduate attributes and skills, at any level of HE, is dependent on the clarity of strategies and methods for identifying the attributes and skills relevant to the programme and where and how these are operationalized. The interrelated factors of Teaching, Learning and Assessment and how these are inclusive in nature, are fundamentally significant to these strategies and methods, as are where and how these are specifically distributed within the programme.

Ordered by graduate attributes and skills, the following table provides a map of the above, plus an exposition to describe and explain the ideas and strategy of each. Therefore, subsequent to the initial completion for approval, maintenance of this table as and when programme structure changes occur is also important:

FHEQ level: 6					
Definitions of Graduate Attributes and Skills Relevant to this Programme	Teaching and Learning Strategy / Methods	Prog Aims	Prog intended Learning Outcomes	Range of Assessments	Related <u>Core</u> Modules
<p>Knowledge / Understanding:</p> <p>Students should demonstrate:</p> <p>A detailed knowledge and understanding of established problems, and theoretical and methodological approaches relevant to Sustainable Maritime Operations</p> <p>A knowledge of the appropriate numerical and statistical techniques suitable for manipulating and evaluating data relevant to Sustainable Maritime Operations</p> <p>An understanding of the interrelationships between the various disciplines within Sustainable Maritime Operations, and with other wider subject areas</p>	<p>Primary:</p> <p>This programme is delivered by fully tutor supported distance e-teaching and learning and integrates student theory and practice learning from: marine sector experts, marine scientists, engineers, practicing managers, entrepreneurs, and other stakeholders.</p> <p>Secondary/Supplementary:</p>	1,3	1	<p>Assessment methods typically include:</p> <p>A research proposal and final 10,000-word dissertation</p> <p>Use of modelling and simulation software.</p>	MLA610

⁵ For programmes containing more than one FHEQ level of study, i.e. a bachelor programme with levels 4, 5 & 6, a separate map must be provided for each level. The table should be copied and pasted to enable this.

<p>within the disciplines of marine science and engineering</p> <p>An ability to consider issues from a range of interdisciplinary and multidisciplinary perspectives</p> <p>A knowledge of marine and maritime organisations, the environment in which they operate and their management</p>	<p>Webinars and guest lectures including virtual face to face and supporting technology to aid student learning.</p> <p>Virtual discussion groups and mentoring.</p>				
---	--	--	--	--	--

An explanation for embedding Knowledge and Understanding through Teaching & Learning and Assessment at this level of the programme:

MLA uses a balanced approach of constructivist and behaviourist teaching and learning; whereby students are 'lectured' in an off-line web-based IT architecture, exposed to practical applications and activities, and complete formative assessment, before undertaking a period of reflection and summative assessment. In this programme the knowledge and understanding teaching, learning and assessment strategy is designed to embrace the nature of distance e-learning and make best use of cutting-edge technology. Students are introduced to appropriate data sources, software and technologies that include industry standard techniques, so that students are able to revisit the information in context, attempt formative assessment (repeatedly if necessary), reflect and then complete a knowledge and understanding focussed assignment, as part of their building a portfolio of work for assessment.

<p>Cognitive and Intellectual Skills:</p> <p>Students should demonstrate:</p> <p>An ability to evaluate academic literature critically, and to analyse, synthesise and critically evaluate scientific and commercial information and data</p> <p>Exploring new or existing data to identify patterns and relationships, with an ability to integrate evidence from a range of sources</p> <p>A capability to define complex problems and develop possible solutions using established techniques and/or models.</p>	<p>Primary:</p> <p>This programme is delivered by fully tutor supported distance e-teaching and learning.</p> <p>Cognitive and intellectual skills teaching, and learning is readily delivered and used in a distance learning environment as students are predominantly mature adult learners, most of whom are employed in the off-shore industry. These adult learners recognise their own educational needs and wants to become highly motivated, take responsibility for their own learning and use distance learning to best effect.</p> <p>Secondary/Supplementary:</p> <p>Webinars and guest lectures including virtual face to face and supporting technology to aid student learning.</p> <p>On and offline seminars, workshops, students' local field work, work-based learning, case studies, project work, simulation,</p>	<p>1,2</p>	<p>2</p>	<p>As above</p>	<p>MLA610</p>
--	---	------------	----------	-----------------	---------------

	practical work and demonstration, virtual discussion groups and mentoring.				
<p>An explanation for embedding Cognitive and Intellectual Skills through Teaching & Learning and Assessment at this level of the programme:</p> <p>Teaching, learning and assessment of cognitive and intellectual skills lends itself well to supported distance e-learning as testing comprehension, logical analysis and problem-solving skills may be readily achieved in e-learning-based formative, numerical and written summative assessments. Students are empowered and take control of their learning content and pace, attending virtual lectures, videos, demonstrations, and simulations, supported by accompanying transcripts and notes. Each lecture is followed by a series of formative assessments allowing the student to test their own progress and knowledge. The learner is given the opportunity to revisit the lecture material as many times as they feel is necessary, to meet the learning outcomes for that section, and complete the formative assessment to an appropriate standard.</p>					
<p>Key Transferable Skills:</p> <p>Students should:</p> <p>Communicate information, arguments, and analysis effectively at both a scientific and professional level using structured and coherent arguments</p> <p>Use a range of techniques to initiate and undertake problem solving</p> <p>Develop an ethical and sustainable dimension to professional practice</p>	<p>Primary:</p> <p>Delivered by tutor supported distance e-teaching and learning, key transferable skills are an integral part of this BSc programme and provide students with valuable and portable enhancements to their frameworks of understanding, wider attributes, and skills base. High quality teaching and learning is provided by tutors recruited from qualified marine sector experts, academics, marine scientists, and engineers.</p> <p>Secondary/Supplementary:</p> <p>Electronic teaching and learning material is enhanced and its currency maintained through on and offline seminars, work-based learning, case studies, project work, practical work and demonstration, virtual discussion groups and mentoring.</p>	2,4	2	As above	MLA610

<p>An explanation for embedding Key Transferable Skills through Teaching & Learning and Assessment at this level of the programme:</p> <p>Key transferable skills teaching, learning and assessment form a continuous theme through this programme and are to be found in all compulsory and optional modules. Planning, critical analysis, research, teamwork, and communication are recurring themes in which students' knowledge, understanding, skills and wider attributes are developed. Lectures, on and offline seminars, workshops, formative and summative assessment are used to build these qualities and students engage in a wide variety of marine environment content through which key transferable skills are taught, learned and examined.</p>					
<p>Employment Related Skills:</p> <p>Students should be able to:</p> <p>Develop and enhance skills for autonomous learning</p> <p>Reflect critically on own learning development and style with application to professional career development</p>	<p>Primary:</p> <p>Having strong roots in the maritime industry, employment related skills are provided through electronic distance learning formats. Employment related skills are a keystone in the BSc lecture programme embraced within lecture content, guided research, formative and summative portfolio construction.</p> <p>Secondary/Supplementary:</p> <p>Work-based learning projects work, case studies, discussion groups and mentoring by well-qualified tutoring staff are used to support primary employment related skill learning.</p>	1,2,3	1	As above	MLA610
<p>An explanation for embedding Employment Related Skills through Teaching & Learning and Assessment at this level of the programme:</p> <p>This BSc programme offers students a wide range of high quality, maritime industry related employment skills. The majority of prospective students have experience in marine related industries and as distance learning students work in operational, engineering, or administrative staff positions. Enhancing their knowledge, understanding, wider skills and attributes through this programme they are able to progress their careers. All modules host employment related skills teaching, learning and assessment, in lectures, discussion groups, webinars, formative and summative assessment.</p>					
<p>Practical Skills:</p> <p>Students should be able to:</p>	<p>Primary:</p> <p>Students benefit from learning practical skills from a broad</p>				

Undertake an investigation competently, describing, interpreting, and evaluating results in a logical manner	<p>selection of appropriately chosen marine sector experts, marine scientists, engineers and practicing managers. While it is recognised that it can be challenging to teach and learn practical skills in a distance learning environment; the use of secondary data sets, on and off-line simulation and pre-recorded practical demonstrations can provide teaching and learning value in this area</p> <p>Secondary/Supplementary:</p> <p>Webinars, live demonstrations, and guest lecturers, including virtual question and answer sessions serve to assist student learning.</p>	2,3	1,4	As above	MLA610
<p>An explanation for embedding Practical Skills through Teaching & Learning and Assessment at this level of the programme:</p> <p>Offering students a contemporary, flexible, and challenging programme this distance, e-learning SMO BSc provides a wide variety of maritime industry related topics and enables graduates to contribute significantly to their employers' business. The challenges of teaching, learning and assessment of the practical skills in a distance learning programme are embraced and overcome through timely and structured use of demonstrations, simulation, practical projects, on and offline seminars, workshops, students' local field work, work-based learning, virtual discussion groups and mentoring.</p>					

3.12. Work Based/Related Learning⁶

FHEQ level: 6 Delete and replace with the level of study (nab a separate table should be provided for each level)					
WBL/WRL Activity:	Logistics	Prog Aim	Prog Intended LO	Range of Assessments	Related Core Module(s)
Application of theory, knowledge and understanding to professional practice in the marine and maritime industry	Built into dissertation and research proposal	1,2,3,4	1,2	As above	MLA610
<p>An explanation of this map: This programme is specifically intended for those already working within the disciplines of maritime commerce, science and engineering. A focus remains, however, in ensuring that all teaching and learning activity demonstrates clear relevance to industry practice and requirements. This will be assured through the regular benchmarking of teaching and learning activities against clear industry requirements, a practice facilitated through the MLA's links with the IMarEST and their participation in groups such as the Marine Industry Alliance Skills Group.</p>					

⁶ The provided table includes only a single line. This will need replicating for each WBL/WRL activity (I, e, placements / real-world industry provided problems to solve / visits / trade shows etc). Additionally, the table should be replicated for each stage of the programme for clarity.

4. Module Records

UNIVERSITY OF PLYMOUTH MODULE RECORD

SECTION A: DEFINITIVE MODULE RECORD. *Proposed changes must be submitted via Faculty/AP Quality Procedures for approval and issue of new module code.*

MODULE CODE: MLA601 **MODULE TITLE:** Maritime Industry in the 21st Century
CREDITS: 20 **FHEQ LEVEL:** 6 **HECOS CODE(S):** F841
PRE-REQUISITES: None **CO-REQUISITES:** None **COMPENSATABLE:** Y

SHORT MODULE DESCRIPTOR:

This module introduces students to the advanced topics of study relevant to the modern maritime industry. Equipping students with a broad underpinning of the challenges and current affairs relevant to the industry, and their deeper exploration through relevant academic research. It serves to facilitate in-depth study of concepts associated with the maritime environment, sustainable design, shipping industry business practice and development. It also exposes students to the question the wider role of the maritime industry, and how it interacts with other industry sectors i.e., logistics and supply chain management functions

ELEMENTS OF ASSESSMENT					
E1 (Examination)	N/A	C1 (Coursework)	100%	P1 (Practical)	N/A
E2 (Clinical Examination)	N/A	A1 (Generic assessment)	N/A		
T1 (Test)	N/A	O1 (online open book assessment)	N/A		

SUBJECT ASSESSMENT PANEL to which module should be linked: MLA

Professional body minimum pass mark requirement: N/A

MODULE AIMS:

This module aims to introduce students to study at Level 6 through supported distance e-learning. Equip students with appropriate study and research skills through a range of applied subject area tasks and explores how modern maritime design, operation and practice can embrace sustainability.

ASSESSED LEARNING OUTCOMES: (additional guidance below; please refer to the Programme Specification for relevant Programme Intended Learning Outcomes).

At the end of the module the learner will be expected to be able to:

Assessed Module Learning Outcomes (ALOs)	Programme Intended Learning Outcomes (PILOs) contributed to
1. Critically evaluate modern shipping industry operations, issues, technological developments 2. Recognise and explain the effects on maritime activities caused by the marine environment 3. Apply a range of tools, models, and frameworks to demonstrate critical review of the module content. This should include analysis of appropriate data sources, and contributions to the MLA's online discussion forum 4. Explore the concept of sustainability in the marine and maritime industry, appraising and evaluating examples of commercial practice and operations 5. Gather, evaluate and use academic literature appropriately as a reflective learner	

DATE OF APPROVAL: 9th November 2015	FACULTY/OFFICE: Academic Partnerships
DATE OF IMPLEMENTATION: 01/2016	SCHOOL/PARTNER: MLA
DATE(S) OF APPROVED CHANGE:	SEMESTER: AY
MODE OF DELIVERY: distance learning	

Additional Guidance for Learning Outcomes:

To ensure that the module is pitched at the right level check your intended learning outcomes against the following nationally agreed standards

- Framework for Higher Education Qualifications <http://www.qaa.ac.uk/docs/qaa/quality-code/qualifications-frameworks.pdf>
- Subject benchmark statements <https://www.qaa.ac.uk/quality-code/subject-benchmark-statements>
- Professional, regulatory and statutory (PSRB) accreditation requirements (where necessary e.g. health and social care, medicine, engineering, psychology, architecture, teaching, law)
- QAA Quality Code <https://www.qaa.ac.uk/quality-code>

SECTION B: DETAILS OF TEACHING, LEARNING AND ASSESSMENT

Items in this section must be considered annually and amended as appropriate, in conjunction with the Module Review Process. Some parts of this page may be used in the KIS return and published on the extranet as a guide for prospective students. Further details for current students should be provided in module guidance notes.

ACADEMIC YEAR: 2022-23

MODULE LEADER: Dr Carlos Martins

NATIONAL COST CENTRE: 111

OTHER MODULE STAFF: Dr Jaimie Cross

Summary of Module Content

Contemporary and cultural issues in the maritime industry, study skills, sustainability and developments in marine technology, organisations and operations in the marine and maritime industry, marine environmental awareness. The wider role of the maritime industry, interactions with other industry sectors.

SUMMARY OF TEACHING AND LEARNING [Use HESA KIS definitions]		
Scheduled Activities	Hours	Comments/Additional Information (briefly explain activities, including formative assessment opportunities)
Lectures (online)	35	Indicative figures for distance learning
Tutorials and formative assessment (online)	25	Indicative figures for distance learning
Directed and self-study	60	Reading and associated study
Personal development planning	20	Reflection within portfolio
Professional portfolio	60	Completion of assessment
Total	200	(NB: 1 credit = 10 hours of learning; 10 credits = 100 hours, etc.)

SUMMATIVE ASSESSMENT

Element Category	Component Name	Component Weighting
Written exam	N/A	N/A
Test	N/A	N/A
Coursework	Interim Report	30%
	Portfolio	70%
Practical	N/A	N/A
Clinical Examination	N/A	N/A
Generic Assessment	N/A	N/A
Online open book assessment	N/A	N/A

REFERRAL ASSESSMENT

Element Category	Component Name	Component Weighting
Written exam	N/A	N/A
Coursework (in lieu of the original assessment)	N/A	N/A
Coursework	Interim Report Portfolio	30% 70%
Practical	N/A	N/A
Clinical Examination	N/A	N/A
Generic Assessment	N/A	N/A
Test	N/A	N/A
Online Open Book Assessment	N/A	N/A

To be completed when presented for Minor Change approval and/or annually updated	
Updated by: Dr. Richard Thain Date: 6 th January 2016	Approved by: MLA Date: 9th November 2015

UNIVERSITY OF PLYMOUTH MODULE RECORD

SECTION A: DEFINITIVE MODULE RECORD. *Proposed changes must be submitted via Faculty/AP Quality Procedures for approval and issue of new module code.*

MODULE CODE: MLA602	MODULE TITLE: Met Ocean Processes and Impacts	
CREDITS: 30	FHEQ LEVEL: 6	HECOS CODE(S): F700
PRE-REQUISITES: None	CO-REQUISITES: None	COMPENSATABLE: N

SHORT MODULE DESCRIPTOR

Met Ocean Processes and Impacts gives students a balanced insight into the earth’s meteorological and oceanographic processes, how they affect the marine environment and are in turn changed by maritime business activity and development. Having gained an understanding of the maritime environment, students examine the requirement for marine environmental protection, how this is achieved and managed across the globe, and developments in offshore renewable energy.

ELEMENTS OF ASSESSMENT					
E1 (Examination)	N/A	C1 (Coursework)	70%	P1 (Practical)	30%
E2 (Clinical Examination)	N/A	A1 (Generic assessment)	N/A		
T1 (Test)	N/A	O1 (online open book assessment)	N/A		

SUBJECT ASSESSMENT PANEL to which module should be linked: MLA

Professional body minimum pass mark requirement: N/A

MODULE AIMS:

This module aims to offer students an opportunity to investigate, in detail, atmospheric and oceanographic processes and their effects on maritime activities. Additionally, facilitating the development of understanding of global maritime environments, their sensitivity to change and protection needs, and defining the complex nature of offshore renewable energy, and evaluating possible solutions.

ASSESSED LEARNING OUTCOMES: (additional guidance below; please refer to the Programme Specification for relevant Programme Intended Learning Outcomes).

At the end of the module the learner will be expected to be able to:

Assessed Module Learning Outcomes (ALOs)	Programme Intended Learning Outcomes (PILOs) contributed to
1. Analyse global and local scale meteorological and oceanographic mechanisms and processes, including the analysis and evaluation of data	(Please align all the relevant PILOs to each ALO as appropriate and expand this box as necessary to include all required information)

<p>2. Describe critically the characteristics of marine and coastal environments, and evaluate their sensitivity to change</p> <p>3. Research and debate arguments to describe and assess the impacts of maritime operations and commercial development on the marine environment</p> <p>4. Describe critically and evaluate typical offshore renewable energy systems</p>	
--	--

DATE OF APPROVAL: 9 th November 2015	FACULTY/OFFICE: Academic Partnerships
DATE OF IMPLEMENTATION: 01/2016	SCHOOL/PARTNER: MLA
DATE(S) OF APPROVED CHANGE:	SEMESTER: AY
MODE OF DELIVERY: distance learning	
<p>Notes: For delivering institution's HE Operations or Academic Partnerships use if required</p>	

Additional Guidance for Learning Outcomes:

To ensure that the module is pitched at the right level check your intended learning outcomes against the following nationally agreed standards

- Framework for Higher Education Qualifications <http://www.qaa.ac.uk/docs/qaa/quality-code/qualifications-frameworks.pdf>
- Subject benchmark statements <https://www.qaa.ac.uk/quality-code/subject-benchmark-statements>
- Professional, regulatory and statutory (PSRB) accreditation requirements (where necessary e.g. health and social care, medicine, engineering, psychology, architecture, teaching, law)
- QAA Quality Code <https://www.qaa.ac.uk/quality-code>

SECTION B: DETAILS OF TEACHING, LEARNING AND ASSESSMENT

Items in this section must be considered annually and amended as appropriate, in conjunction with the Module Review Process. Some parts of this page may be used in the KIS return and published on the extranet as a guide for prospective students. Further details for current students should be provided in module guidance notes.

ACADEMIC YEAR: 2022-23

MODULE LEADER: Dr Carlos Martins

NATIONAL COST CENTRE: 111

OTHER MODULE STAFF: Dr Jaimie Cross

Summary of Module Content

Atmospheric physics, ocean processes, analysis of scientific data sets, offshore renewable energy.

SUMMARY OF TEACHING AND LEARNING [Use HESA KIS definitions]		
Scheduled Activities	Hours	Comments/Additional Information (briefly explain activities, including formative assessment opportunities)
Lectures (online)	50	Indicative figures for distance learning
Tutorials and formative assessment (online)	35	Indicative figures for distance learning
Directed and self-study	100	Reading and associated study
Personal development planning	10	Reflection within portfolio
Professional portfolio	105	Completion of assessment
Total	300	(NB: 1 credit = 10 hours of learning; 10 credits = 100 hours, etc.)

SUMMATIVE ASSESSMENT

Element Category	Component Name	Component Weighting
Written exam	N/A	N/A
Test	N/A	N/A
Coursework	Regional Coastal Environmental Report	100%
Practical	Recorded video presentation	100%
Clinical Examination	N/A	N/A
Generic Assessment	N/A	N/A
Online open book assessment	N/A	N/A

REFERRAL ASSESSMENT

Element Category	Component Name	Component Weighting
Written exam	N/A	N/A
Coursework (in lieu of the original assessment)	Regional Coastal Environmental Report	100%
Coursework	N/A	N/A
Practical	Recorded video presentation	100%
Clinical Examination	N/A	N/A
Generic Assessment	N/A	N/A
Test	N/A	N/A
Online Open Book Assessment	N/A	N/A

To be completed when presented for Minor Change approval and/or annually updated	
Updated by: Dr. Richard Thain Date: 6th January 2016	Approved by: MLA Date: 9th November 2015

UNIVERSITY OF PLYMOUTH MODULE RECORD

SECTION A: DEFINITIVE MODULE RECORD. *Proposed changes must be submitted via Faculty/AP Quality Procedures for approval and issue of new module code.*

MODULE CODE: MLA603	MODULE TITLE: Maritime Regulation and Governance	
CREDITS: 30	FHEQ LEVEL: 6	HECOS CODE(S): L434
PRE-REQUISITES: None	CO-REQUISITES: None	COMPENSATABLE: N

SHORT MODULE DESCRIPTOR:

This module gives students opportunity to investigate in detail, aspects of the maritime business world; its regulation, organisation, behaviour and management. Students build their knowledge and understanding of the economic and financial driving forces, maritime commercial frameworks, governance, regulation, and legislation.

ELEMENTS OF ASSESSMENT					
E1 (Examination)	N/A	C1 (Coursework)	100%	P1 (Practical)	N/A
E2 (Clinical Examination)	N/A	A1 (Generic assessment)	N/A		
T1 (Test)	N/A	O1 (online open book assessment)	N/A		

SUBJECT ASSESSMENT PANEL to which module should be linked: MLA

Professional body minimum pass mark requirement: N/A

MODULE AIMS:

This module aims to provide opportunities to investigate in detail, relevant elements of maritime regulation and legislation. The module also aims to develop commercial acumen, skills in numeracy and problem solving, and in management and leadership.

ASSESSED LEARNING OUTCOMES: (additional guidance below; please refer to the Programme Specification for relevant Programme Intended Learning Outcomes).

At the end of the module the learner will be expected to be able to:

Assessed Module Learning Outcomes (ALOs)	Programme Intended Learning Outcomes (PILOs) contributed to
<ol style="list-style-type: none"> 1. Describe and evaluate relevant examples of regulation and legislation within the maritime industry 2. Manipulate and interpret financial data using appropriate techniques 3. Evaluate the uses and management of finance in a topical setting, including the use of financial systems and instruments for planning, control, decision making and managing risk 	

4. Discuss the theories and models relating to management in the maritime industry, evaluating decision making processes	
--	--

DATE OF APPROVAL: 9th November 2015	FACULTY/OFFICE: Academic Partnerships
DATE OF IMPLEMENTATION: 01/2016	SCHOOL/PARTNER: MLA
DATE(S) OF APPROVED CHANGE:	SEMESTER: AY
MODE OF DELIVERY: distance learning	
Notes: For delivering institution's HE Operations or Academic Partnerships use if required	

Additional Guidance for Learning Outcomes:

To ensure that the module is pitched at the right level check your intended learning outcomes against the following nationally agreed standards

- Framework for Higher Education Qualifications
<http://www.qaa.ac.uk/docs/qaa/quality-code/qualifications-frameworks.pdf>
- Subject benchmark statements <https://www.qaa.ac.uk/quality-code/subject-benchmark-statements>
- Professional, regulatory and statutory (PSRB) accreditation requirements (where necessary e.g. health and social care, medicine, engineering, psychology, architecture, teaching, law)
- QAA Quality Code <https://www.qaa.ac.uk/quality-code>

SECTION B: DETAILS OF TEACHING, LEARNING AND ASSESSMENT

Items in this section must be considered annually and amended as appropriate, in conjunction with the Module Review Process. Some parts of this page may be used in the KIS return and published on the extranet as a guide for prospective students. Further details for current students should be provided in module guidance notes.

ACADEMIC YEAR: 2022-23

MODULE LEADER: Dr Carlos Martins

NATIONAL COST CENTRE: 111

OTHER MODULE STAFF: Dr Jaimie Cross

Summary of Module Content

Management decision making and the role of boards in the leadership of maritime companies. Formulation of company strategy and objectives. The various components of strategic management, corporate strategies and the corporates missions and objectives will be discussed with case examples. How these work in theory and the necessary tools and administration to do this is considered. The theory of governance and its relevance to the marine and maritime industries. The effect on internationally operating marine and maritime companies of international, national, and regional governments, relevant conventions and regulations. Exploring how policy affects the running of individual international maritime companies. Management financial essentials, interpretation of accounts, capital sourcing relevant to the current economic climate.

SUMMARY OF TEACHING AND LEARNING [Use HESA KIS definitions]		
Scheduled Activities	Hours	Comments/Additional Information (briefly explain activities, including formative assessment opportunities)
Lectures (online)	50	Indicative figures for distance learning
Tutorials and formative assessment (online)	35	Indicative figures for distance learning
Directed and self-study	100	Reading and associated study
Personal development planning	10	Reflection within portfolio
Professional portfolio	105	Completion of assessment
Total	300	(NB: 1 credit = 10 hours of learning; 10 credits = 100 hours, etc.)

SUMMATIVE ASSESSMENT

Element Category	Component Name	Component Weighting
Written exam	N/A	N/A
Test	N/A	N/A
Coursework	Company Case study	50%
	Financial Analysis	50%
Practical	N/A	N/A
Clinical Examination	N/A	N/A
Generic Assessment	N/A	N/A
Online open book assessment	N/A	N/A

REFERRAL ASSESSMENT

Element Category	Component Name	Component Weighting
Written exam	N/A	N/A
Coursework (in lieu of the original assessment)	Company Case study Financial Analysis	50% 50%
Coursework	N/A	N/A
Practical	N/A	N/A
Clinical Examination	N/A	N/A
Generic Assessment	N/A	N/A
Test	N/A	N/A
Online Open Book Assessment	N/A	N/A

To be completed when presented for Minor Change approval and/or annually updated	
Updated by: Dr. Richard Thain Date: 6th January 2016	Approved by: MLA Date: 9th November 2015

UNIVERSITY OF PLYMOUTH MODULE RECORD

SECTION A: DEFINITIVE MODULE RECORD. *Proposed changes must be submitted via Faculty/AP Quality Procedures for approval and issue of new module code.*

MODULE CODE: MLA604	MODULE TITLE: Maritime Operations	
CREDITS: 30	FHEQ LEVEL: 6	HECOS CODE(S): F841
PRE-REQUISITES: None	CO-REQUISITES: None	COMPENSATABLE: N

SHORT MODULE DESCRIPTOR:

This module brings together marine industry economic, ethical, and environmental drivers to build understanding of the need for sustainable operations, now and in the future. Investigations into areas such as green ship technology and ballast water may be undertaken, building knowledge, and understanding such that the student is able to make effective judgements balancing economic and ethical aspects in the modern, digital maritime business environment.

ELEMENTS OF ASSESSMENT					
E1 (Examination)	N/A	C1 (Coursework)	60%	P1 (Practical)	40%
E2 (Clinical Examination)	N/A	A1 (Generic assessment)	N/A		
T1 (Test)	N/A	O1(online open book assessment)	N/A		

SUBJECT ASSESSMENT PANEL to which module should be linked: MLA

Professional body minimum pass mark requirement: N/A

MODULE AIMS:

This module aims to provide students a cutting-edge knowledge of issues relating to achieving sustainability in the maritime industry, both from an environmental perspective and a business perspective.

ASSESSED LEARNING OUTCOMES: (additional guidance below; please refer to the Programme Specification for relevant Programme Intended Learning Outcomes).

At the end of the module the learner will be expected to be able to:

Assessed Module Learning Outcomes (ALOs)	Programme Intended Learning Outcomes (PILOs) contributed to
<ol style="list-style-type: none"> 1. Define the complex and interrelated nature of issues relating to environmental impact and protection in the maritime industry 2. Research, describe and evaluate management and operational practices and strategies found in the maritime industry 3. Examine and evaluate practices relating to Corporate and Social Responsibility, and ethical behaviour in business 	

4. Synthesise a vision for sustainable maritime business operations and strategic behaviour in the digital era	
--	--

DATE OF APPROVAL: 9 th November 2015	FACULTY/OFFICE: Academic Partnerships
DATE OF IMPLEMENTATION: 01/2016	SCHOOL/PARTNER: MLA
DATE(S) OF APPROVED CHANGE:	SEMESTER: AY
MODE OF DELIVERY: distance learning	

Additional Guidance for Learning Outcomes:

To ensure that the module is pitched at the right level check your intended learning outcomes against the following nationally agreed standards

- Framework for Higher Education Qualifications
<http://www.qaa.ac.uk/docs/qaa/quality-code/qualifications-frameworks.pdf>
- Subject benchmark statements <https://www.qaa.ac.uk/quality-code/subject-benchmark-statements>
- Professional, regulatory and statutory (PSRB) accreditation requirements (where necessary e.g. health and social care, medicine, engineering, psychology, architecture, teaching, law)
- QAA Quality Code <https://www.qaa.ac.uk/quality-code>

SECTION B: DETAILS OF TEACHING, LEARNING AND ASSESSMENT

Items in this section must be considered annually and amended as appropriate, in conjunction with the Module Review Process. Some parts of this page may be used in the KIS return and published on the extranet as a guide for prospective students. Further details for current students should be provided in module guidance notes.

ACADEMIC YEAR: 2022-23

MODULE LEADER: Dr Carlos Martins

NATIONAL COST CENTRE: 111

OTHER MODULE STAFF: Dr Jaimie Cross

Summary of Module Content

Economics of the marine and maritime industries, sustainable business practices - from economic, environmental and social perspectives. The use of green ship technology, now and in the future, to meet regulatory and operational requirements e.g. ballast water management. Decision making processes in marine and maritime operations scenarios, and balancing economic, environmental and social aspects of doing business in a contemporary setting.

SUMMARY OF TEACHING AND LEARNING [Use HESA KIS definitions]		
Scheduled Activities	Hours	Comments/Additional Information (briefly explain activities, including formative assessment opportunities)
Lectures (online)	80	Indicative figures for distance learning
Tutorials and formative assessment (online)	35	Indicative figures for distance learning
Directed and self-study	50	Reading and associated study
Personal development planning	30	Reflection within portfolio
Professional portfolio	105	Completion of assessment
Total	300	(NB: 1 credit = 10 hours of learning; 10 credits = 100 hours, etc.)

SUMMATIVE ASSESSMENT

Element Category	Component Name	Component Weighting
Written exam	N/A	N/A
Test	N/A	N/A
Coursework	Environmental impact analysis	100%
Practical	Recorded presentation	100%
Clinical Examination	N/A	N/A
Generic Assessment	N/A	N/A
Online open book assessment	N/A	N/A

REFERRAL ASSESSMENT

Element Category	Component Name	Component Weighting
Written exam	N/A	N/A
Coursework (in lieu of the original assessment)	Environmental impact analysis	100%
Coursework	N/A	N/A
Practical	Recorded presentation	100%
Clinical Examination	N/A	N/A
Generic Assessment	N/A	N/A
Test	N/A	N/A
Online Open Book Assessment	N/A	N/A

To be completed when presented for Minor Change approval and/or annually updated	
Updated by: Dr. Richard Thain Date: 6th January 2016	Approved by: MLA Date: 9th November 2015

UNIVERSITY OF PLYMOUTH MODULE RECORD

SECTION A: DEFINITIVE MODULE RECORD. *Proposed changes must be submitted via Faculty/AP Quality Procedures for approval and issue of new module code.*

MODULE CODE: MLA610B **MODULE TITLE:** Maritime Operations
CREDITS: 40 **FHEQ LEVEL:** 6 **HECOS CODE(S):** 100404
PRE-REQUISITES: None **CO-REQUISITES:** None **COMPENSATABLE:** N

SHORT MODULE DESCRIPTOR:

The module begins with a taught element of research skills (including literature search and review, numerical analysis, and data management), to equip students with the skills necessary to undertake an Honours project successfully. Students then have the opportunity to research a topic or problem of interest. Students may participate in either an established research area or follow a line of work based on their interests.

ELEMENTS OF ASSESSMENT					
E1 (Examination)	N/A	C1 (Coursework)	90%	P1 (Practical)	10%
E2 (Clinical Examination)	N/A	A1 (Generic assessment)	N/A		
T1 (Test)	N/A	O1 (online open book assessment)	N/A		

SUBJECT ASSESSMENT PANEL to which module should be linked: MLA

Professional body minimum pass mark requirement: N/A

MODULE AIMS:

This module aims to provide students a cutting-edge knowledge of issues relating to achieving sustainability in the maritime industry, both from an environmental perspective and a business perspective.

ASSESSED LEARNING OUTCOMES: (additional guidance below; please refer to the Programme Specification for relevant Programme Intended Learning Outcomes).

At the end of the module the learner will be expected to be able to:

Assessed Module Learning Outcomes (ALOs)	Programme Intended Learning Outcomes (PILOs) contributed to
1. Plan and manage a self-directed period of study 2. To undertake an Honours-level research project in a systematic way 3. Demonstrate an ability to critically analyse current research and scholarship in the topic of choice	

4. Communicate their work effectively and professionally to a specialist and non-specialist audience	
--	--

DATE OF APPROVAL: 24/09/2018	FACULTY/OFFICE: Academic Partnerships
DATE OF IMPLEMENTATION: 09/2018	SCHOOL/PARTNER: MLA
DATE(S) OF APPROVED CHANGE:	SEMESTER: AY
MODE OF DELIVERY: distance learning	

Additional Guidance for Learning Outcomes:

To ensure that the module is pitched at the right level check your intended learning outcomes against the following nationally agreed standards

- Framework for Higher Education Qualifications
<http://www.qaa.ac.uk/docs/qaa/quality-code/qualifications-frameworks.pdf>
- Subject benchmark statements <https://www.qaa.ac.uk/quality-code/subject-benchmark-statements>
- Professional, regulatory and statutory (PSRB) accreditation requirements (where necessary e.g. health and social care, medicine, engineering, psychology, architecture, teaching, law)
- QAA Quality Code <https://www.qaa.ac.uk/quality-code>

SECTION B: DETAILS OF TEACHING, LEARNING AND ASSESSMENT

Items in this section must be considered annually and amended as appropriate, in conjunction with the Module Review Process. Some parts of this page may be used in the KIS return and published on the extranet as a guide for prospective students. Further details for current students should be provided in module guidance notes.

ACADEMIC YEAR: 2022-2023

MODULE LEADER: Dr Carlos Martins

NATIONAL COST CENTRE: 111

OTHER MODULE STAFF: Dr Jaimie Cross

Summary of Module Content

Research skills package, selection and development of research question, literature review, final dissertation.

SUMMARY OF TEACHING AND LEARNING [Use HESA KIS definitions]		
Scheduled Activities	Hours	Comments/Additional Information (briefly explain activities, including formative assessment opportunities)
Lectures (online)	10	Indicative figures for distance learning
Tutorials and formative assessment	10	Indicative figures for distance learning
Guided independent study	375	Reading and associated study
Seminars	5	
Total	400	(NB: 1 credit = 10 hours of learning; 10 credits = 100 hours, etc.)

SUMMATIVE ASSESSMENT

Element Category	Component Name	Component Weighting
Written exam	N/A	N/A
Test	N/A	N/A
Coursework	Dissertation, project proposal and abstract	100%
Practical	Presentation	100%
Clinical Examination	N/A	N/A
Generic Assessment	N/A	N/A
Online open book assessment	N/A	N/A

REFERRAL ASSESSMENT

Element Category	Component Name	Component Weighting
Written exam	N/A	N/A
Coursework (in lieu of the original assessment)	Dissertation, project proposal and abstract	100%
Coursework	N/A	N/A
Practical	Presentation	100%
Clinical Examination	N/A	N/A
Generic Assessment	N/A	N/A
Test	N/A	N/A
Online Open Book Assessment	N/A	N/A

To be completed when presented for Minor Change approval and/or annually updated	
Updated by: Dr Jaimie Cross Date: 23/10/2018	Approved by: Richard Thain Date: 29/10/18